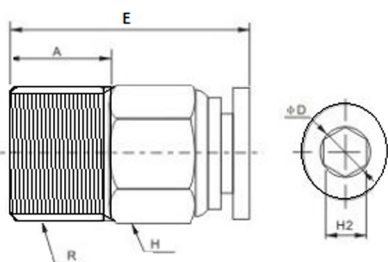
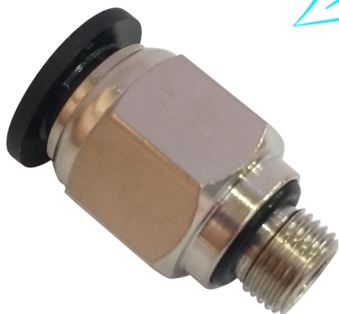


## Linha Pneumática SinoxTec

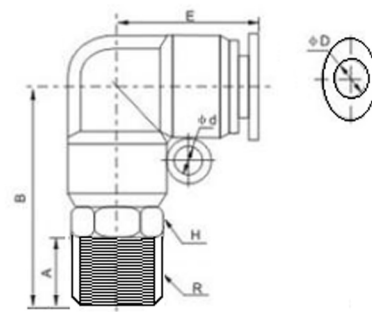


Conector reto BSP							
Dimensões (mm)							
Modelo	ØD	R	A	E	H	H2	Ref.
PCG04-M6	4	M6	4	20	10	4	20463
PCG06-M5	6	M5	5	23	12	2	20440
PCG06-01		R1/8	7	22	12	4	20442
PCG06-02		R1/4	9	22	14	4	20443
PCG06-03		R3/8	10	22	17	4	20444
PCG06-04	R1/2	10	23	21	4	20445	
PCG08-01	8	R1/8	8	27	14	4	20446
PCG08-02		R1/4	10	25	14	6	20448
PCG08-03		R3/8	10	22	17	6	20449
PCG08-04		R1/2	11	24	21	6	20450
PCG10-01	10	R1/8	8	31	17	4	20451
PCG10-02		R1/4	10	31	17	6	20452
PCG10-03		R3/8	10	30	17	8	20453
PCG10-04		R1/2	11	25	21	8	20454
PCG12-01	12	R1/8	8	32	19	4	20455
PCG12-02		R1/4	10	33	19	6	20456
PCG12-03		R3/8	10	30	19	8	20457
PCG12-04		R1/2	11	30	21	8	20458
PCG14-02	14	R1/4	11	34	21	8	20460
PCG14-03		R3/8	11	38	24	6	20462
PCG14-04		R1/2	12	39	24	8	20459
PCG16-04	16	R1/2	15	39	27	12	20461

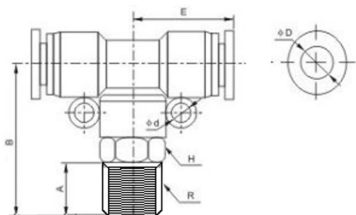
### Conector em L BSP

#### Dimensões (mm)

Modelo	ØD	R	A	B	H	E	Ød	Ref.
PLG04-M5	4	M5	5	25	10	20	/	20484
PLG04-01		R1/8	7	27	10	20	/	20485
PLG04-03		R3/8	8	29	21	20	/	20486
PLG06-01	6	R1/8	7	28	12	21	4	20487
PLG06-02		R1/4	9	30	14	21	4	20488
PLG06-03		R3/8	10	31	17	21	4	20489
PLG06-04	R1/2	11	32	21	21	4	20490	
PLG08-01	8	R1/8	8	32	14	24	5	20491
PLG08-02		R1/4	10	34	14	24	5	20492
PLG08-03		R3/8	10	34	17	24	5	20493
PLG08-04		R1/2	11	36	21	24	5	20494
PLG10-01	10	R1/8	8	36	17	27	5	20495
PLG10-02		R1/4	10	38	17	27	5	20496
PLG10-03		R3/8	10	38	17	27	5	20497
PLG10-04		R1/2	11	39	21	27	5	20498
PLG12-02	12	R1/4	10	40	19	30	5	20499
PLG12-03		R3/8	10	41	19	30	5	20500
PLG12-04		R1/2	11	42	21	30	5	20501
PLG14-04	14	R1/2	15	45	24	30	4	20503
PLG16-04	16	R1/2	15	51	27	34	4	20502



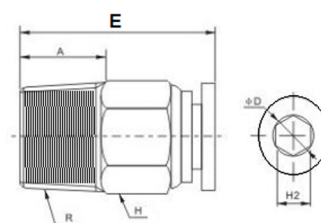
## Linha Pneumática SinoxTec



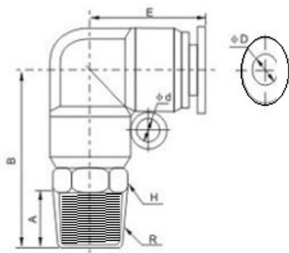
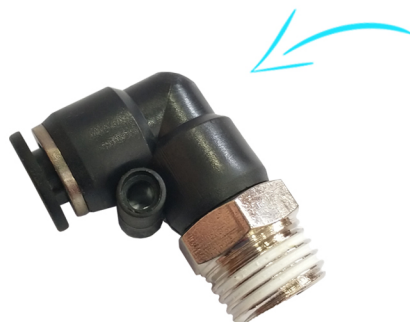
Conector em T BSP								
Dimensões (mm)								
Modelo	ØD	R	A	B	E	H	Ød	Ref.
PBG06-01	6	R1/8	7	38	21	12	4	20520
PBG06-02		R1/4	9	30	21	14	4	20521
PBG06-03		R3/8	10	31	21	17	4	20522
PBG06-04		R1/2	10	33	21	21	4	20523
PBG08-01	8	R1/8	8	32	23	14	5	20524
PBG08-02		R1/4	10	33	23	14	5	20525
PBG08-03		R3/8	10	34	23	17	5	20526
PBG08-04		R1/2	11	35	23	21	5	20527
PBG10-01	10	R1/8	8	37	28	17	4	20528
PBG10-02		R1/4	10	38	28	17	4	20529
PBG10-03		R3/8	10	38	28	17	5	20530
PBG10-04		R1/2	11	39	28	21	5	20531

Conector reto NPT  
Dimensões (mm)

Modelo	ØD	R	A	E	H	H2	Ref.
PC04-M6	4	M6	5	20	10	4	20483
PC06-01	6	R1/8	7	22	12	4	20464
PC06-02		R1/4	9	22	14	4	20465
PC06-03		R3/8	10	22	17	4	20466
PC06-04		R1/2	10	23	21	4	20467
PC08-01	8	R1/8	8	27	14	4	20468
PC08-02		R1/4	10	25	14	6	20469
PC08-03		R3/8	10	22	17	6	20470
PC08-04		R1/2	11	24	21	6	20471
PC10-02	10	R1/4	10	31	17	6	20472
PC10-03		R3/8	10	30	17	8	20473
PC10-04		R1/2	11	25	21	8	20474
PC12-01	12	R1/8	8	32	19	4	20475
PC12-02		R1/4	10	33	19	6	20476
PC12-03		R3/8	10	30	19	8	20477
PC12-04		R1/2	11	30	21	8	20478
PC14-02	14	R1/4	9	33	21	14	20480
PC14-03		R3/8	11	38	24	6	20482
PC14-04		R1/2	12	39	24	8	20479
PC16-04	16	R1/2	15	39	27	12	20481



## Linha Pneumática SinoxTec



### Conector em L NPT

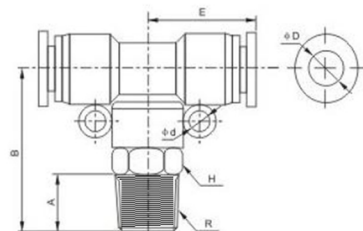
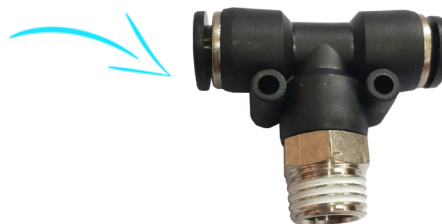
#### Dimensões (mm)

Modelo	ØD	R	A	B	H	E	Ød	Ref.
PL06-01	6	R1/8	7	28	12	21	4	20504
PL06-02		R1/4	9	30	14	21	4	20505
PL06-03		R3/8	10	31	17	21	4	20506
PL06-04		R1/2	11	32	21	21	4	20507
PL08-01	8	R1/8	8	32	14	24	5	20508
PL08-02		R1/4	10	34	14	24	5	20509
PL08-03		R3/8	10	34	17	24	5	20510
PL08-04		R1/2	11	36	21	24	5	20511
PL10-01	10	R1/8	8	36	17	27	5	20512
PL10-02		R1/4	10	38	17	27	5	20513
PL10-03		R3/8	10	38	17	27	5	20514
PL10-04		R1/2	11	39	21	27	5	20515
PL12-02	12	R1/4	10	40	19	30	5	20516
PL12-03		R3/8	10	41	19	30	5	20517
PL12-04		R1/2	11	42	21	30	5	20518
PL16-04	16	R1/2	15	51	27	34	4	20519

### Conector em T NPT

#### Dimensões (mm)

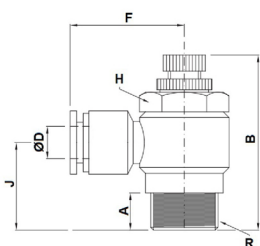
Modelo	ØD	R	A	B	E	H	Ød	Ref.
PB06-01	6	R1/8	7	38	21	12	4	20532
PB06-02		R1/4	9	30	21	14	4	20533
PB06-03		R3/8	10	31	21	17	4	20534
PB06-04		R1/2	10	33	21	21	4	20535
PB08-01	8	R1/8	8	32	23	14	5	20536
PB08-02		R1/4	10	33	23	14	5	20537
PB08-03		R3/8	10	34	23	17	5	20538
PB08-04		R1/2	11	35	23	21	5	20539
PB10-01	10	R1/8	8	37	28	17	4	20540
PB10-02		R1/4	10	38	28	17	4	20541
PB10-03		R3/8	10	38	28	17	5	20542



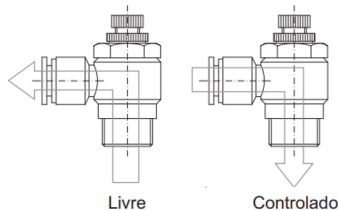
### Válvula reguladora de fluxo BSP

#### Dimensões (mm)

Modelo	ØD	R	A	B	H	F	J	Ref.
SLG06-01	6	R1/8	9	25	12	25	16	20543
SLG06-02		R1/4	12	43	15	25	19	20544
SLG06-03		R3/8	12	46	19	29	21	20545
SLG06-04		R1/2	13	50	22	36	23	20546
SLG08-01	8	R1/8	9	25	12	25	16	20547
SLG08-02		R1/4	12	43	15	25	19	20548
SLG08-03		R3/8	12	46	19	29	21	20549
SLG08-04		R1/2	13	50	22	36	23	20550
SLG10-01	10	R1/8	9	25	12	25	16	20551
SLG10-02		R1/4	12	43	15	25	19	20552
SLG10-03		R3/8	12	46	19	29	21	20553
SLG10-04		R1/2	13	50	22	36	23	20554



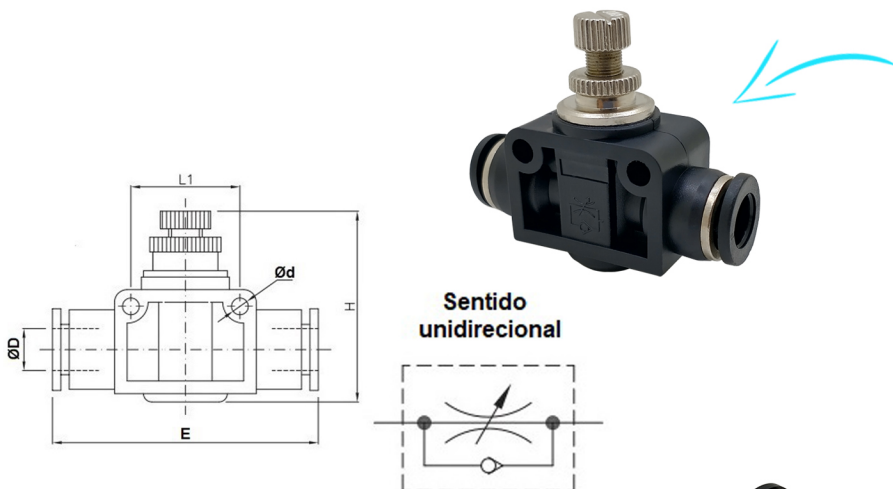
Sentido de controle



Livre

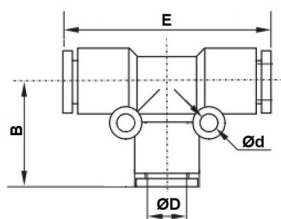
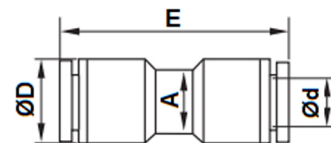
Controlado

## Linha Pneumática SinoxTec

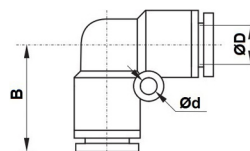


Válvula reguladora de fluxo reta						
Dimensões (mm)						
Modelo	ØD	L1	E	Ød	H	Ref.
LSA-06	6	20	47	4	39	20602
LSA-08	8	22	50	4	43	20603
LSA-10	10	26	62	4	48	20604
LSA-12	12	32	73	4	51	20605

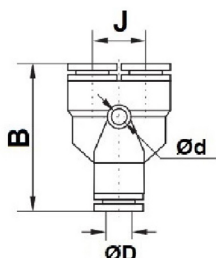
União reta					
Dimensões (mm)					
Modelo	Ød	A	ØD	E	Ref.
PU-04	4	7	11	32	20555
PU-06	6	10	13	35	20556
PU-08	8	11	14	38	20557
PU-10	10	13	17	47	20558
PU-12	12	15	19	49	20559
PU -14	14	19	21	53	20560



União em T					
Dimensões (mm)					
Modelo	ØD	B	E	Ød	Ref.
PE-04	4	17	34	3	20573
PE-06	6	21	38	3	20574
PE-08	8	23	43	4	20575
PE-10	10	28	55	4	20576
PE-12	12	29	57	4	20577
PE-14	14	34	70	5	20578

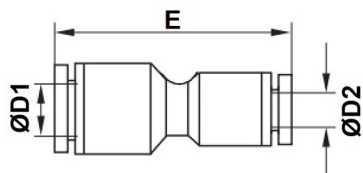


União em L				
Dimensões (mm)				
Modelo	ØD	B	Ød	Ref.
PV-04	4	17	/	20568
PV-06	6	19	4	20569
PV-08	8	22	5	20570
PV-10	10	27	5	20571
PV-12	12	28	4	20572



União em Y					
Dimensões (mm)					
Modelo	ØD	B	J	Ød	Ref.
PY-04	4	38	12	3	20587
PY-06	6	39	13	4	20588
PY-08	8	43	16	4	20589
PY-10	10	49	18	4	20590
PY-12	12	50	22	4	20591
PY-14	14	54	23	5	20592

## Linha Pneumática SinoxTec

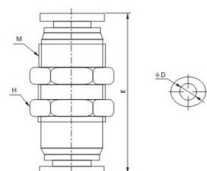
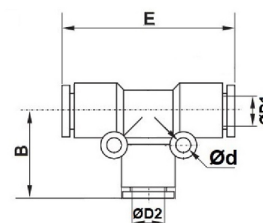


União reta com redução				
Dimensões (mm)				
Modelo	ØD1	ØD2	E	Ref.
PG06-04	6	4	35	20565
PG08-04	8	4	48	20566
PG08-06	8	6	36	20567
PG10-06	10	6	67	20561
PG10-08	10	8	38	20562
PG12-10	12	10	47	20563
PG16-12	16	12	48	20564

União em T com redução

Dimensões (mm)

Modelo	ØD1	ØD2	B	E	Ød	Ref.
PGE06-04	6	4	20	41	4	20584
PGE08-06	8	6	18	45	5	20585
PGE10-06	10	6	27	57	4	20580
PGE10-08	10	8	24	51	5	20581
PGE12-08	12	8	28	59	5	20582
PGE12-10	12	10	28	59	5	20583



União para painel

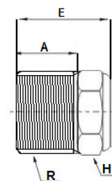
Dimensões (mm)

Modelo	Ød	M	E	H	Ref.
PM06	6	M14 x 1.0	37	17	20596
PM08	8	M16 x 1.0	37	19	20597
PM10	10	M20 x 1.0	45	24	20598
PM12	12	M22 x 1.0	46	27	20599
PM14	14	M24 x 1.0	47	27	20600
PM16	16	M28 x 1.0	59	32	20601

Silenciador cabeça chata latão

Dimensões (mm)

Modelo	R	A	E	H1	Ref.
BSLMG-01	1/8	6	10	12	20608
BSLMG-02	1/4	7	12	15	20607
BSLMG-04	1/2	9	15	21	20606



Silenciador com regulador de fluxo

Dimensões (mm)

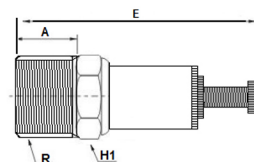
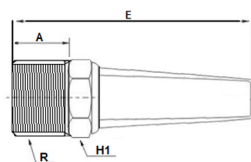
Modelo	R	A	E	H1	Ref.
BESLG-01	1/8	7	32	12	20610
BESLG-02	1/4	7	34	13	20609
BESLG-03	3/8	9	37	17	20611
BESLG-04	1/2	9	43	21	20612
BESLG-05	3/4	13	60	27	20613



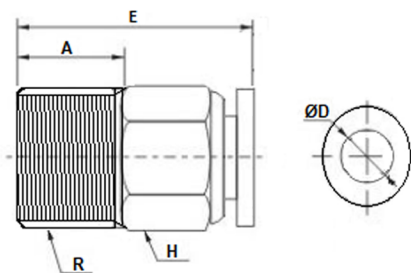
Silenciador longo

Dimensões (mm)

Modelo	R	A	E	H1	Ref.
BSLG-01	1/8	6	22	12	20615
BSLG-02	1/4	7	26	15	20614
BSLG-03	3/8	8	36	18	20616
BSLG-04	1/2	9	40	21	20617
BSLG-05	3/4	10	48	27	20618



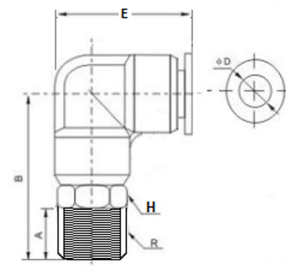
## Linha Pneumática SinoxTec



Conector reto inox						
Dimensões (mm)						
Modelo	ØD	R	A	E	H	Ref.
PCG06-01	6	1/8	6	22	12	20619
PCG06-02		1/4	7	23	14	20620
PCG06-03		3/8	8	24	17	20621
PCG06-04		1/2	9	25	22	20622
PCG08-01	8	1/8	7	26	14	20623
PCG08-02		1/4	7	23	14	20624
PCG08-03		3/8	8	25	17	20625
PCG08-04		1/2	9	25	22	20626
PCG10-01	10	1/8	7	26	17	20627
PCG10-02		1/4	8	25	22	20628
PCG10-03		3/8	8	24	17	20629
PCG10-04		1/2	7	25	22	20630
PCG12-01	12	1/8	7	30	19	20631
PCG12-02		1/4	9	40	19	20632
PCG12-03		3/8	9	25	22	20633
PCG12-04		1/2	9	25	22	20634

Conector em L inox  
Dimensões (mm)

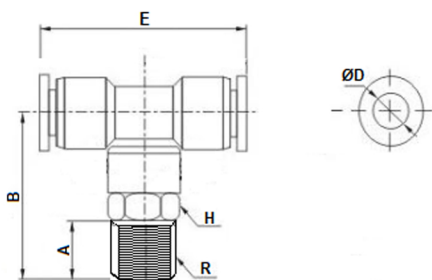
Modelo	ØD	R	A	B	H	E	Ref.
PLG06-01	6	R1/8	6	24	12	29	20635
PLG06-02		R1/4	7	25	14	29	20636
PLG06-03		R3/8	8	27	17	32	20637
PLG06-04		R1/2	9	28	22	33	20638
PLG08-01	8	R1/8	7	26	14	32	20639
PLG08-02		R1/4	7	27	14	32	20640
PLG08-03		R3/8	8	28	17	35	20641
PLG08-04		R1/2	8	30	22	36	20642
PLG10-01	10	R1/8	7	29	17	37	20643
PLG10-02		R1/4	9	30	17	37	20644
PLG10-03		R3/8	8	30	17	38	20645
PLG10-04		R1/2	8	32	22	40	20646
PLG12-01	12	R1/8	7	31	17	38	20647
PLG12-02		R1/4	8	32	17	38	20648
PLG12-03		R3/8	8	35	22	41	20649
PLG12-04		R1/2	9	35	22	42	20650



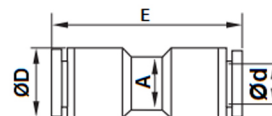
## Linha Pneumática SinoxTec



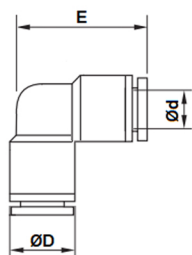
Conector em T inox							
Dimensões (mm)							
Modelo	ØD	R	A	B	H	E	Ref.
PBG06-01	6	R1/8	6	25	12	45	20651
PBG06-02		R1/4	8	27	14	45	20652
PBG06-03		R3/8	8	28	17	45	20653
PBG06-04		R1/2	9	30	22	45	20654
PBG08-01	8	R1/8	7	28	14	49	20655
PBG08-02		R1/4	8	30	14	49	20656
PBG08-03		R3/8	8	31	17	49	20657
PBG08-04		R1/2	9	32	22	49	20658
PBG10-01	10	R1/8	8	31	17	54	20659
PBG10-02		R1/4	9	32	17	54	20660
PBG10-03		R3/8	8	31	17	54	20661
PBG10-04		R1/2	9	33	22	54	20662
PBG12-01	12	R1/8	7	36	22	59	20663
PBG12-02		R1/4	9	37	22	59	20664
PBG12-03		R3/8	9	37	22	59	20665
PBG12-04		R1/2	8	36	22	59	20666



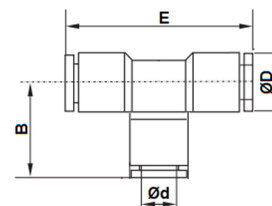
União reta inox					
Dimensões (mm)					
Modelo	Ød	A	ØD	C	Ref.
PU-04	4	9	10	30	20667
PU-06	6	10	12	34	20668
PU-08	8	12	14	37	20669
PU-10	10	14	16	38	20670
PU-12	12	18	20	39	20671
PU-14	14	20	22	41	20672



União em L inox				
Dimensões (mm)				
Modelo	Ød	E	ØD	Ref.
PV-04	4	22	10	20673
PV-06	6	28	12	20674
PV-08	8	31	14	20675
PV-10	10	35	16	20676
PV-12	12	39	20	20677
PV-14	14	39	20	20678



União em T inox					
Dimensões (mm)					
Modelo	Ød	B	E	ØD	Ref.
PE-04	4	23	35	10	20679
PE-06	6	28	44	12	20680
PE-08	8	32	49	14	20681
PE-10	10	35	54	16	20682
PE-12	12	40	59	20	20683
PE-14	14	43	65	22	20684



### Notas:

\*A empresa reserva-se o direito de efetuar alterações sem aviso prévio.

\*As medidas podem sofrer variações dependendo do lote do material.